



# NAMA

**QINGDAO NAMA INDUSTRIAL CO.,LTD.**

Room 2601,Shuangfu Building,NO.887,Tong'an Road,  
Qingdao,266000,China  
Tel: +86 532 85027077  
Fax: +86 532 85027677  
E-mail: nama@nama.cn



[ Wechat ]

[www.nama.cn](http://www.nama.cn)

## NAMA TRUCK & BUS TIRES CATALOGUE

# ABOUT US

---

## QINGDAO NAMA INDUSTRIAL CO.,LTD.

NAMA GROUP was founded in 2000.

With the philosophy "QUALITY IS LIFE", NAMA GROUP adopted the world leading tire technology, used the most premium Malaysian natural rubber, renowned Belgium BEKAERT brand steel wire and etc. Each NAMA tire had passed strict quality control tests. NAMA tire ranks very high quality level among Chinese brands.

After all these years' hard working, NAMA GROUP has produced 7,000,000 units Truck Tires, 1,500,000 units Bias Tires and 12,000,000 units Car Tires in total. NAMA Tires have been exporting to more than 100 countries all over the world. Thanks to the loyalty of its distributors, NAMA has become one of the most reliable brands in the world.

In order to serve its distributors well, NAMA GROUP developed new bus/ truck tire and car tire lines for North American, European and Russian Market. SMARTWAY and EU-LABEL are available now.

Insisting the philosophy "QUALITY IS LIFE" and slogan "Carrying the world, Driving the future", NAMA GROUP will focus on the globalization and continue to supply high quality tires for clients all over the world with most convenient conditions

### WHY WORK WITH NAMA

1. QUALITY IS LIFE: eternal belief of NAMA GROUP.
2. 2014 annual production capacity: TBR tire 1,200,000 units, PCR tire 12,000,000 units, OTR tire 40,000 units.
3. Exported to more than 100 countries, NAMA brand has earned high reputation worldwide
4. Most professional tire services, products can be custom-made according to clients' request.
5. Comprehensive marketing support policy for clients.

NAMA GROUP

# CONTENTS

---

## ALL POSITION

NF100 01

NF101 02

NF102 03

NF104 04

NF106 05

NF109 06

## DRIVE POSITION

ND103 07

ND109 08

## STEER POSITION

NF110 09

## TRAILER POSITION

NF108 10

## OFF ROAD

ND106 11





# NAMA TRUCK & BUS TIRES

## ALL POSITION



## NF100

ENGINEERED TO MAXIMIZE MILEAGE IN REGIONAL HAUL APPLICATION



- Long tread life.
- Good steering.
- Low heat generated.
- Fuel saving.

Size	PR	Load Index	Overall Diameter (Inch)	Section Width (Inch)	Tread Depth (Inch/32")	Max Load		Pressure		Max Speed (MPH)
						Lbs	Kg	PSI	kPa	
★ 11R22.5	16	148/145	41.5	10.9	22	6945/6393	3150/2900	123	850	80
★ 315/80R22.5	20	156/153	42.6	12.2	20	8819/8047	4000/3650	123	850	80

\* Final pattern is subject to true tyre.



## NF101

ENGINEERED TO MAXIMIZE MILEAGE IN REGIONAL HAUL APPLICATION



- Long tread life.
- Good steering.
- Low heat generated.
- Fuel saving.

Size	PR	Load Index	Overall Diameter (Inch)	Section Width (Inch)	Tread Depth (Inch/32")	Max Load		Pressure		Max Speed (MPH)
						Lbs	Kg	PSI	kPa	
★ 11R22.5	16	148/145	41.3	10.9	18	6945/6393	3150/2900	123	850	80
★ 295/75R22.5	16	146/143	41.3	10.9	18	6614/6008	3000/2725	123	850	80

\* Final pattern is subject to true tyre.



## NF102

ENGINEERED TO MAXIMIZE MILEAGE IN REGIONAL HAUL APPLICATION



- Long tread life.
- Good steering.
- Low heat generated.
- Fuel saving.

Size	PR	Load Index	Overall Diameter (Inch)	Section Width (Inch)	Tread Depth (Inch/32")	Max Load		Pressure		Max Speed (MPH)
						Lbs	Kg	PSI	kPa	
★ 275/80R22.5	16	147/144	40	10.7	19	6779/6173	3075/2800	120	830	80

\* Final pattern is subject to true tyre.



## NF104

ENGINEERED TO MAXIMIZE MILEAGE IN REGIONAL HAUL APPLICATION



- Good navigation, smooth operation.
- Stone rejection and wear resistance.
- Flexible use for both dry and slippery roads.

Size	PR	Load Index	Overall Diameter (Inch)	Section Width (Inch)	Tread Depth (Inch/32")	Max Load		Pressure		Max Speed (MPH)
						Lbs	Kg	PSI	kPa	
★ 295/75R22.5	16	146/143	40.6	11.2	23	6614/6008	3000/2725	120	830	80

\* Final pattern is subject to true tyre.





## NF106

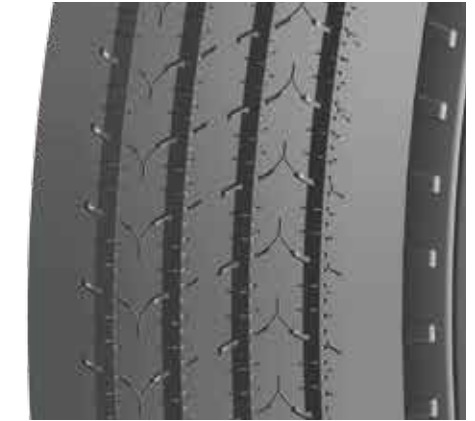
ENGINEERED TO MAXIMIZE MILEAGE IN REGIONAL HAUL APPLICATION



- Good navigation, smooth operation.
- Stone rejection and wear resistance.
- Flexible use for both dry and slippery roads.

Size	PR	Load Index	Overall Diameter	Section Width	Tread Depth	Max Load		Pressure		Max Speed (MPH)
			(Inch)	(Inch)	(Inch/32")	Lbs	Kg	PSI	kPa	
★ 11R22.5	16	148/145	41.3	10.9	18	6945/6393	3150/2900	123	850	80

\* Final pattern is subject to true tyre.



## NF109

ENGINEERED TO MAXIMIZE MILEAGE IN REGIONAL HAUL APPLICATION



- Eco-friendly performance & value.
- Straight grooves and stress-dispersion sipes promote even wear and contributes to exceptional wet traction.
- Curb guard protects the casing from in-service damage.
- Stone defense features effectively minimize rock and pebble packing to protect the belt package and casing from stone drilling.

Size	PR	Load Index	Overall Diameter	Section Width	Tread Depth	Max Load		Pressure		Max Speed (MPH)
			(Inch)	(Inch)	(Inch/32")	Lbs	Kg	PSI	kPa	
★★ 11R22.5	16	148/145	41.5	10.9	19	6945/6393	3150/2900	123	850	80
★★★ 11R24.5	16	149/146	43.5	11.1	19	7160/6610	3248/2998	120	830	75
★★★ 255/70R22.5	16	140/137	36.5	10.1	16	5510/5070	2500/2300	116	800	75
★★ 295/75R22.5	16	146/143	40.6	11.2	19	6614/6008	3000/2725	120	830	80

\* Final pattern is subject to true tyre.



## ND103

ENGINEERED TO MAXIMIZE MILEAGE IN REGIONAL HAUL APPLICATION



- Long tread life.
- Low heat generated.
- Suitable for driving wheel position.
- Firm road grip.

Size	PR	Load Index	Overall Diameter (Inch)	Section Width (Inch)	Tread Depth (Inch/32")	Max Load		Pressure		Max Speed (MPH)
						Lbs	Kg	PSI	kPa	
★ 11R22.5	16	148/145	41.8	10.9	26	6945/6393	3150/2900	123	850	80
★ 295/75R22.5	16	146/143	41.8	10.9	26	6614/6008	3000/2725	123	850	80

\* Final pattern is subject to true tyre.



## ND109

REGIONAL SERVICE TIRE WITH HIGH MILEAGE CAPABILITY



- Drive tire with high fuel efficiency and superb traction.
- Large blocks with 3D-kerf ensure traction capabilities in all weather conditions and improves over all mileage.
- New tread compound enhances dispersion and fuel efficiency.

Size	PR	Load Index	Overall Diameter (Inch)	Section Width (Inch)	Tread Depth (Inch/32")	Max Load		Pressure		Max Speed (MPH)
						Lbs	Kg	PSI	kPa	
★★ 11R22.5	16	148/145	41.5	10.9	26	6945/6393	3150/2900	123	850	80
★★★ 11R24.5	16	149/146	43.9	11.1	26	7160/6610	3248/2998	120	830	75
★★★ 285/75R24.5	16	147/144	41.9	11.3	26	5510/5070	2499/2300	120	830	75
★★ 295/75R22.5	16	146/143	40.6	11.2	26	6614/6008	3000/2725	120	830	80

\* Final pattern is subject to true tyre.





## NF110

REGIONAL SERVICE TIRE WITH HIGH MILEAGE CAPABILITY



## NF108

REGIONAL SERVICE TIRE WITH HIGH MILEAGE CAPABILITY



- Fuel efficiency for long distance transport.
- Advanced stress dispersion spreads strain evenly across the tire surface for the best possible wear behavior, maintaining ideal contact shape with the road surface for maximum mileage capability even under varying loads.
- Contoured shoulder ribs flex under load to form a flat surface, improving the tire footprint and delivering even wear.
- Decoupling groove has been redesigned using a teardrop shape at the base to add flexibility, which reduces strain and prevents tearing.
- Uniformity safeguards integrate the latest in precision tire production. This quality assurance method ensures the most consistent tire shape possible, promoting healthy wear and extending tire mileage.

- 12/32" tread depth balances fuel economy and mileage.
- Solid shoulder rib helps provide uniform wear in the shoulder.
- Pressure distribution groove helps promote even wear.
- Circumferential and lateral grooves help deliver all-season traction.

Size	PR	Load Index	Overall Diameter	Section Width	Tread Depth	Max Load		Pressure		Max Speed (MPH)
			(Inch)	(Inch)	(Inch/32")	Lbs	Kg	PSI	kPa	
★ ★ 11R22.5	16	148/145	41.5	10.9	19	6945/6393	3150/2900	123	850	80
★ ★ ★ 11R24.5	16	149/146	43	11.5	19	7160/6610	3248/2998	120	830	75
★ ★ 295/75R22.5	16	146/143	40.6	11.2	19	6614/6008	3000/2725	120	830	80

\* Final pattern is subject to true tyre.

Size	PR	Load Index	Overall Diameter	Section Width	Tread Depth	Max Load		Pressure		Max Speed (MPH)
			(Inch)	(Inch)	(Inch/32")	Lbs	Kg	PSI	kPa	
★ ★ ★ 295/75R22.5	16	146/143	39.8	11.1	12	6610/6005	2998/2724	120	830	75

\* Final pattern is subject to true tyre.



# ND106

CONSTRUCTION, MINING OPERATION.



- Good lug pattern designed to enhance cut resistance due to bad road.
- More tread depth for better loadability and firm road grip.
- Good for gravel, rocky and slippery roads.

Size	PR	Load Index	Overall Diameter	Section Width	Tread Depth	Max Load		Pressure		Max Speed (MPH)
			(Inch)	(Inch)	(Inch/32")	Lbs	Kg	PSI	kPa	
* 12.00R24	20	160/157	49.2	12.1	40	9921/9094	4500/4125	130	900	50

\* Final pattern is subject to true tyre.

## NAMA TRUCK & BUS TIRES CATALOGUE

- ★ First phase: available now
- ★★ Second phase: available in the first half of 2017
- ★★★ Third phase: available in the second half of 2017